

# ROOFING & CLADDING EXCELLENCE

Specialists in residential sector buildings



[www.macgroupuk.com](http://www.macgroupuk.com)







Budenberg Haus Apartments, Altrincham  
BUFR, Single Ply & Green Roofing - the first residential development to be designed by Foster and Partners outside of London. ▶



# MAC are residential sector specialists and have been successfully delivering schemes in this sector for over 45 years.

## Installing high quality roofing and cladding solutions

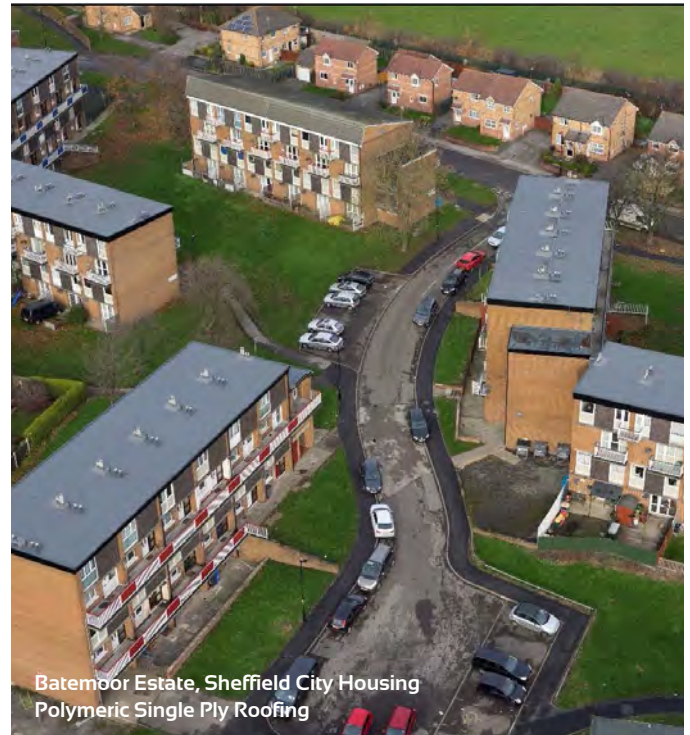
Based in Bromborough, with offices throughout the UK, MAC are one of the UK's leading installers of roofing and cladding systems. We are a family business and have worked hard to develop a reputation for delivering high quality roofing workmanship, combined with outstanding technical support and customer service.

## Specialists in residential projects

At MAC we have the skillset, experience and flexibility to take on residential projects of any size, all across the UK.. From smaller local projects to large, new build city centre developments, MAC Roofing's reputation in the residential sector is truly second to none.

## A problem solving approach

We take time to listen to our clients' in order to fully understand their requirements. This then puts us in the best possible position to deliver an effective, long-term solution that fully meets the brief. For complicated roofing or cladding requirements, our experienced team will be able to offer practical and innovative ways to overcome any potential problems that may arise.



## The MAC difference

- ✓ Ability to deliver residential projects of all types & sizes, all across the UK
- ✓ Excellent communication and a considerate approach to working at all times
- ✓ Experience in both flat & pitched roofing
- ✓ Ability to install a range of roof & wall cladding systems
- ✓ Uncompromising approach to Health & Safety on site
- ✓ Carbon Zero certified with ISO 9001, 14001 & 45001 accreditation



## Completing projects safely

MAC employs over 150 operatives, including roofers, cladders, joiners and plumbers, giving our clients access to an unrivalled, multi-disciplined installation service.

Safety is also extremely important when carrying out roofing or cladding projects of any kind. The health and wellbeing of all individuals onsite is our number one priority and we take all necessary steps to achieve this. MAC has an outstanding health and safety record and holds numerous industry accreditations in this area.



## Exceptional technical support

Our friendly team of technical experts have the expertise and insight that will help ensure that your project runs smoothly, ultimately saving you money.

At MAC we install quality roofing and cladding systems from the UK's leading manufacturers which are fully supported by meaningful guarantees.

In addition, we provide a full technical support service, including:

- ✓ Initial advice & guidance
- ✓ On-site surveys
- ✓ Comprehensive reports
- ✓ Bespoke specifications



Timber Wharf, Manchester  
Monolithic Hot Melt Waterproofing





The Residences, Birmingham  
Hot Melt, Green Roofs & Solar PV Panels

## Minimising disruption

The diverse nature of the projects we work on demands a flexible approach that minimises disruption to our clients. We understand that waterproofing activities may only be possible during certain times of the day, and our experienced Project Managers therefore ensure that all onsite work is carried out considerately and safely.

When working on occupied buildings, we endeavour to organise deliveries and installation services so that day-to-day activities can continue unaffected. We are also experienced in working in live working environments, some of which may be sensitive or particularly high risk, and our fully trained and badged Operators carry all of the necessary approvals and accreditations that may be required.

## Caring for the environment

At MAC we create living and working spaces for people to enjoy, making a positive difference to the occupants of buildings and local communities.

We take our ecological responsibilities seriously and recognise that the environmental performance of a building can be as crucial as the other functions it fulfils.

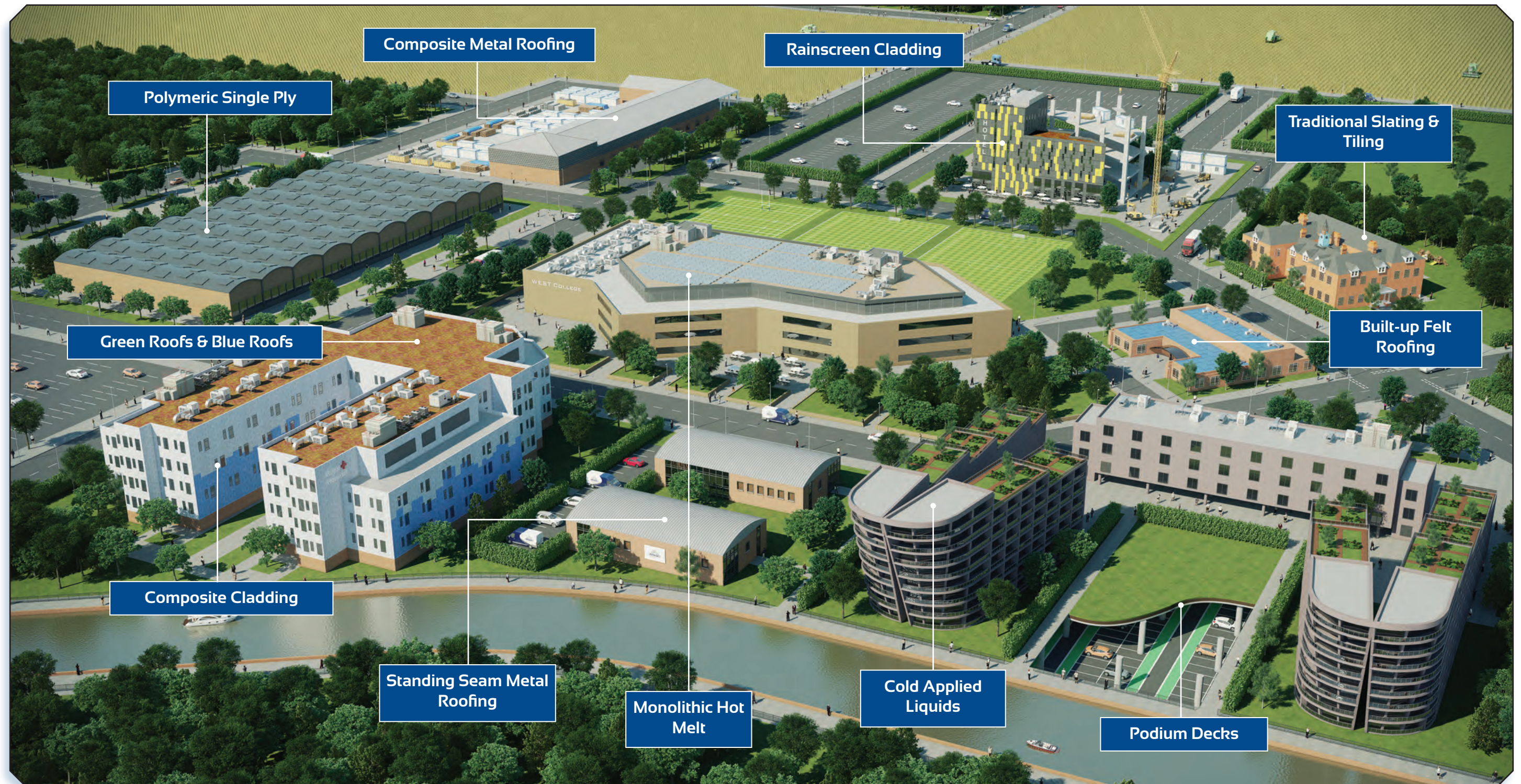
MAC has implemented an Environmental Management System which fully meets the demands of BS EN ISO 14001:2015. We are also Net Carbon Zero certified, utilising the most sustainable products and installation techniques available and operating stringent quality control and working procedures to minimise waste of materials and energy during site installations.





# A diverse, versatile skill-set.

With strategic locations across the UK, an in-house fabrication division and one of the largest teams of directly employed operatives, MAC has the ability to install virtually any type of flat roofing, pitched roofing or envelope cladding system.








# Budenberg Apartments, Altrincham



## New Build Case Study



 <p><b>Sector</b> Residential</p>	 <p><b>Solution Provided</b></p> <ul style="list-style-type: none"><li>• BUFR &amp; Single Ply Roofing</li><li>• Green Roof Finishes</li><li>• 10,000m<sup>2</sup> of Inverted Roofing &amp; 16,000m<sup>2</sup> of Podium Deck Protection over Car Park</li></ul>
 <p><b>Size / Value</b> £1.1 Million</p>	
 <p><b>Client</b> Urban Splash</p>	





# The Residences, Birmingham



## New Build Case Study



**Sector**  
Residential



**Size / Value**  
£1.2 Million



**Client**  
Winvic



### Solution Provided

- Inverted Roof System with Monolithic Hot Melt Waterproofing
- Green & Photovoltaic Roof Finishes





# Clipper's Quay, Salford

## New Build Case Study



 <b>Sector</b> Residential	 <b>Solution Provided</b> <ul style="list-style-type: none"><li>• Inverted Roof System with Hot Melt Waterproofing (12,000m<sup>2</sup>)</li><li>• Architectural Aluminium Detailing</li></ul>
 <b>Size / Value</b> £1.1 Million	
 <b>Client</b> Sir Robert McAlpine	





# Residential sector experience



Wapping Wharf, Bristol



Size/Value:  
£3.5 Million



Systems:  
Single Ply, Vioo Zinc,  
ACM & Timber Cladding



Kampus, Manchester



Size/Value:  
£1.3 Million



Systems:  
Hot Melt, BUFR &  
Slating



Batemoor Estate, Sheffield



Size/Value:  
7,000m<sup>2</sup>



Systems:  
Single Ply & Cold  
Liquid Detailing



Adelphi Wharf, Salford



Size/Value:  
£2.9 Million



Systems:  
Hot Melt &  
Composite Cladding



Poplar Riverside, London



Size/Value:  
£1.8 Million



Systems:  
Hot Melt



Manchester New Square



Size/Value:  
£1.3 Million



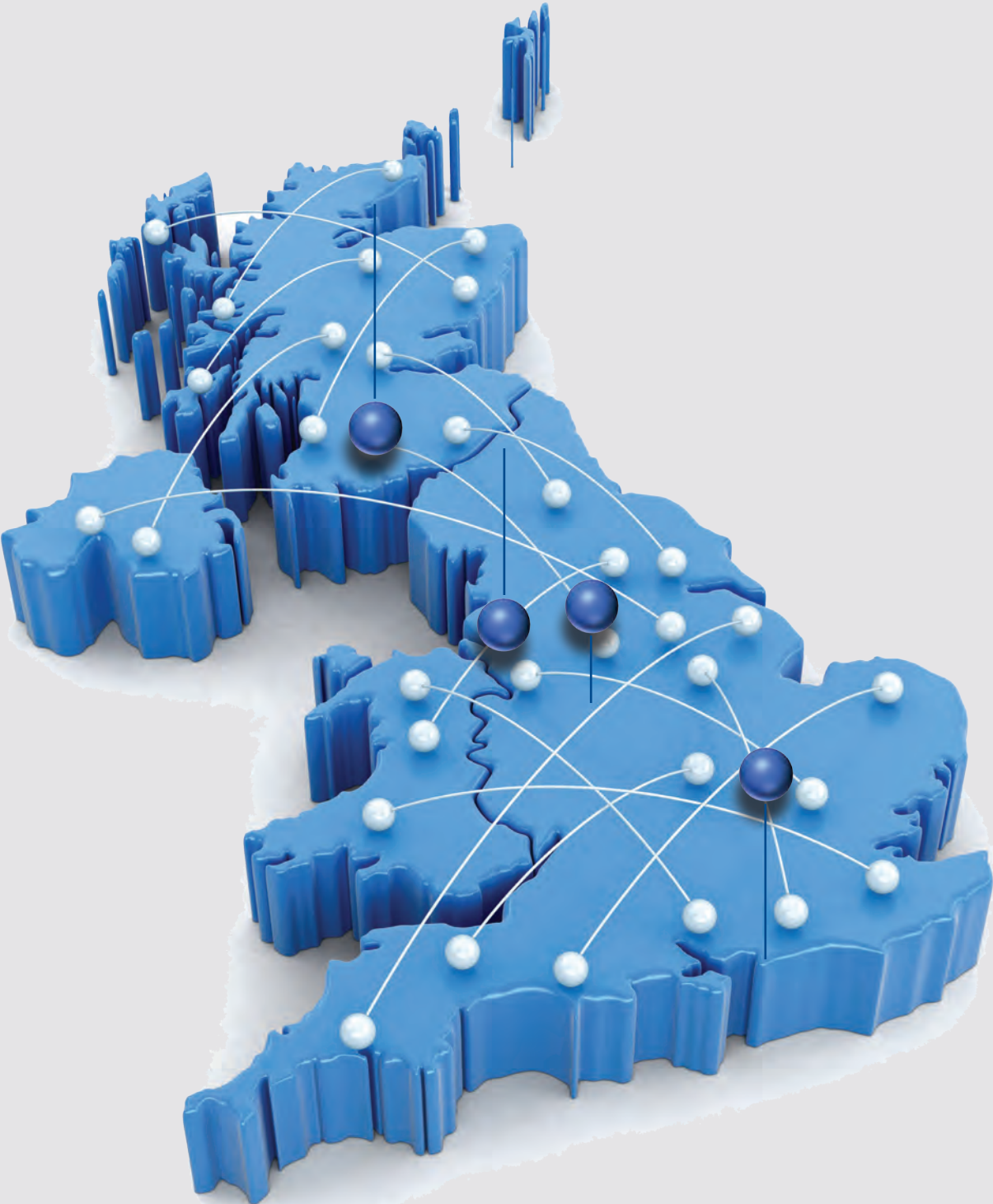
Systems:  
Hot Melt &  
Aluminium Detailing



# Coverage & capability.

Based in Bromborough, Wirral, and with additional offices situated nationwide, MAC has the financial capability and technical expertise to take on projects of any scale, anywhere in the UK.

We offer specification advice and full technical support across a broad range of external waterproofing disciplines, and work closely with the UK's leading manufacturers and other supply chain partners to maximise efficiencies on every project. Our dynamic, flexible approach also means that we help clients meet tight project deadlines and achieve their budgetary targets.



**Scotland Office  
Glasgow**

- Servicing projects across Scotland & North East England



**Head Office  
Bromborough**

- Servicing projects across the Midlands & North West England



**Northern Office  
Manchester**

- In-house architectural aluminium fabrication



**Southern Office  
Cambridge**

- Servicing projects across London and Southern England



Having quality employees is what makes us who we are and we will continue to invest in our people and recruit where needed in order to deliver many more successful projects across the UK.







**MAC Roofing & Contracting Ltd (Head Office)**

Unit 1, Lumina Business Park, Martindale Road, Bromborough, Wirral, CH62 3PT

**MAC Roofing & Contracting Ltd (Southern Office)**

Lakes Business Park, Unit 2 Willow Court, St. Ives, Cambridgeshire, PE28 9RD

**MAC Roofing & Contracting Ltd (Scotland Office)**

33-35 Dalsholm Avenue, Glasgow, Scotland, G20 0TS

T: 0151 346 2670

E: [enquiries@macroofing.com](mailto:enquiries@macroofing.com)

**[www.macgroupuk.com](http://www.macgroupuk.com)**