

# ROOFING & CLADDING EXCELLENCE

Specialists in healthcare sector buildings



[www.macgroupuk.com](http://www.macgroupuk.com)







Furness General Hospital - Maternity Unit  
Bespoke Architectural Aluminium Cladding

# At MAC we help create high quality, flexible buildings that have a positive impact on the treatment, recovery and well being of patients

## Expertise to take on the most challenging roofing projects

MAC's extensive experience in the healthcare sector means that it is perfectly placed to provide roofing and cladding solutions for a wide range of projects. Whether it's new build or refurbishment, large or small, public or private sector, MAC has a proven ability to deliver first-class waterproofing, with workmanship and service standards to be proud of.

## A collaborative approach that makes a real impact

With a genuine partnering ethos on each and every project, MAC works closely with designers, commissioners and constructors alike. By forging strong relationships with clients and healthcare providers, we are able to fully understand their ongoing requirements, enabling us to suggest the best possible solutions and integrate seamlessly within the wider construction programme.

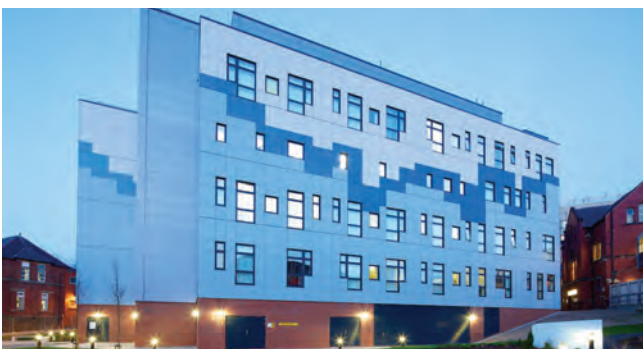
At MAC we have knowledge and experience in operating within all of the common procurement schemes, such as Scape, ProCure 21 and other local framework or PFI initiatives. We have developed long-standing partnerships with some of the country's leading NHS Trusts, and have become the roofing partner of choice for clients across the wider health and social care sector.



Newton Community Hospital, St. Helens  
Pitched Roofing

## The MAC difference

- ✓ Detailed understanding of how to deliver successful roofing projects into the healthcare sector
- ✓ Capability to handle any project, from small refurbishments to major new build developments
- ✓ Wide roofing skill-set with capacity to act as Principal Contractor if required
- ✓ Considerate, efficient working practices to minimise disruption
- ✓ Commitment to the highest standards of Health & Safety
- ✓ Carbon Zero certified with ISO 9001, 14001 & 45001 accreditation





## World class roofing solutions for public sector construction

Healthcare facilities provided by the government are effectively the public face of the NHS. It is therefore essential to provide a modern, high quality environment in which patients can be treated effectively and receive the best possible care.

MAC has successfully worked on numerous public sector healthcare projects, delivering high performance waterproofing solutions that will meet its clients needs now and into the future.

In addition, MAC's ability to work considerably in what are often sensitive or even high security facilities means that they are a roofing contractor you can trust.

- ✓ Mental Health Inpatient Units
- ✓ Adult Acute Care Hospitals
- ✓ Rehabilitation Units
- ✓ Primary Care Facilities
- ✓ Multi-Disciplinary GP Surgeries
- ✓ Diagnostic & Treatment Facilities
- ✓ Public Health Centres
- ✓ Community Hospitals





## Cost-effective, innovative roofing for private healthcare projects

At MAC, we appreciate that it's not just the NHS and local government that face funding challenges. Private clients operate in a competitive environment too and therefore need access to cost-effective, dependable solutions.

With over 40 years' experience in delivering quality waterproofing systems into the private healthcare sector, MAC can be relied upon to deliver projects on time, on budget, and without any hassle.

All in all, you can trust MAC to provide value for money and long-lasting performance.

- ✓ Private Surgical Units
- ✓ Elderly Care Establishments
- ✓ Private IVF Facilities
- ✓ Dental Surgeries
- ✓ Cosmetic Surgery Units
- ✓ Private Hospitals
- ✓ Social Care Centres



## Minimising disruption

The diverse nature of the projects we work on demands a flexible approach that minimises disruption to our clients. We understand that waterproofing activities may only be possible during certain times of the day, and our experienced Project Managers therefore ensure that all onsite work is carried out considerately and safely.

When working on occupied buildings, we endeavour to organise deliveries and installation services so that day-to-day activities can continue unaffected. We are also experienced in working in live working environments, some of which may be sensitive or particularly high risk, and our fully trained and badged Operators carry all of the necessary approvals and accreditations that may be required.

## Caring for the environment

At MAC we create living and working spaces for people to enjoy, making a positive difference to the occupants of buildings and local communities.

We take our ecological responsibilities seriously and recognise that the environmental performance of a building can be as crucial as the other functions it fulfils.

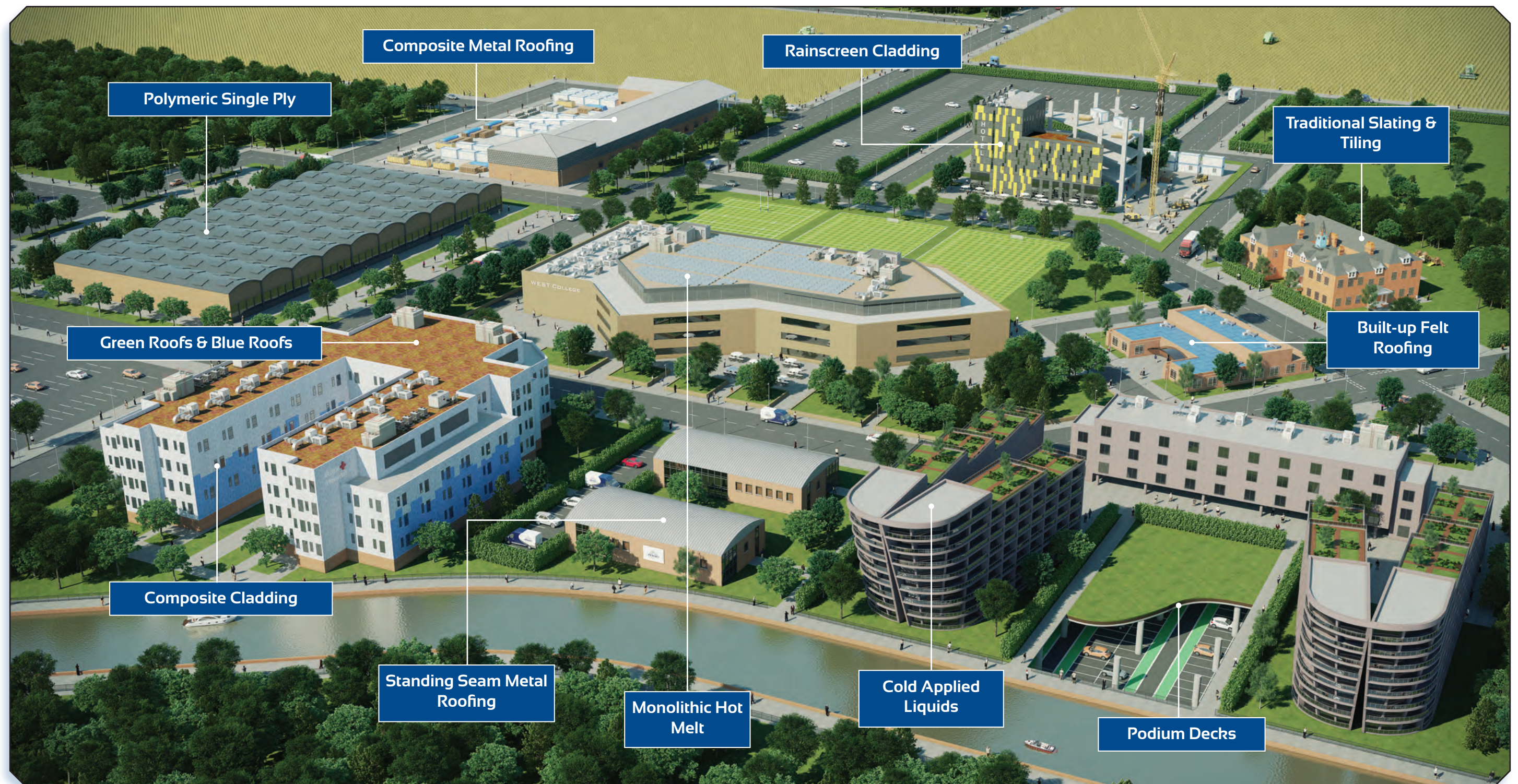
MAC has implemented an Environmental Management System which fully meets the demands of BS EN ISO 14001:2015. We are also Net Carbon Zero certified, utilising the most sustainable products and installation techniques available and operating stringent quality control and working procedures to minimise waste of materials and energy during site installations.





# A diverse, versatile skill-set.

With strategic locations across the UK, an in-house fabrication division and one of the largest teams of directly employed operatives, MAC has the ability to install virtually any type of flat roofing, pitched roofing or envelope cladding system.





# Furness General Hospital, Maternity Unit

## New Build Case Study



**Sector**  
Healthcare



**Size / Value**  
TBC



**Client**  
Vinci



### Solution Provided

- 4mm Alucobond External Cladding
- 'Secret-Fix' Aluminium Soffits & Column Covers
- Innovatice Architectural Crease with PVDF Finish







# The Harbour, Fylde Coast, Blackpool

## New Build Case Study



	<b>Sector</b> Healthcare	 <b>Solution Provided</b> <ul style="list-style-type: none"><li>• Standing Seam Roofing (15,000m<sup>2</sup>)</li><li>• Hot Melt, Liquid Roofing &amp; Green Roofing (5,000m<sup>2</sup>)</li><li>• Pitched Roof Slating</li><li>• External Wall Cladding</li></ul>
	<b>Size / Value</b> £2.1 Million	
	<b>Client</b> Vinci Facilities	









# MSU Healthcare Unit, Ealing



## New Build Case Study



	<b>Sector</b> Healthcare	 <b>Solution Provided</b> <ul style="list-style-type: none"><li>• Inverted Roof System with Hot Melt Waterproofing (5,760m<sup>2</sup>)</li><li>• Pitched Roof Slating</li><li>• Zinc Wall Cladding</li></ul>
	<b>Size / Value</b> £1.2 Million	
	<b>Client</b> Kier	





# Healthcare sector experience



Heatherwood Hospital, Ascot



Size/Value:  
£3.5 Million



Systems:  
Hot Melt, Single Ply & Cladding



Royal Oldham Hospital



Size/Value:  
6,500m<sup>2</sup>



Systems:  
Green Roofing & Pitched Roofing



Manchester Royal Eye Hospital



Size/Value:  
4,000m<sup>2</sup>



Systems:  
Hot Melt, Single Ply & Pitched Roofing



Defence & National Rehabilitation Centre (DNRC)



Size/Value:  
£5.8 Million



Systems:  
Slating, Hot Melt, Single Ply & Cladding



Edinburgh Futures Institute



Size/Value:  
£1.5 Million



Systems:  
Pitched Roofing & Specialist Leadwork



Merseycare, Maghull



Size/Value:  
£2.1 Million



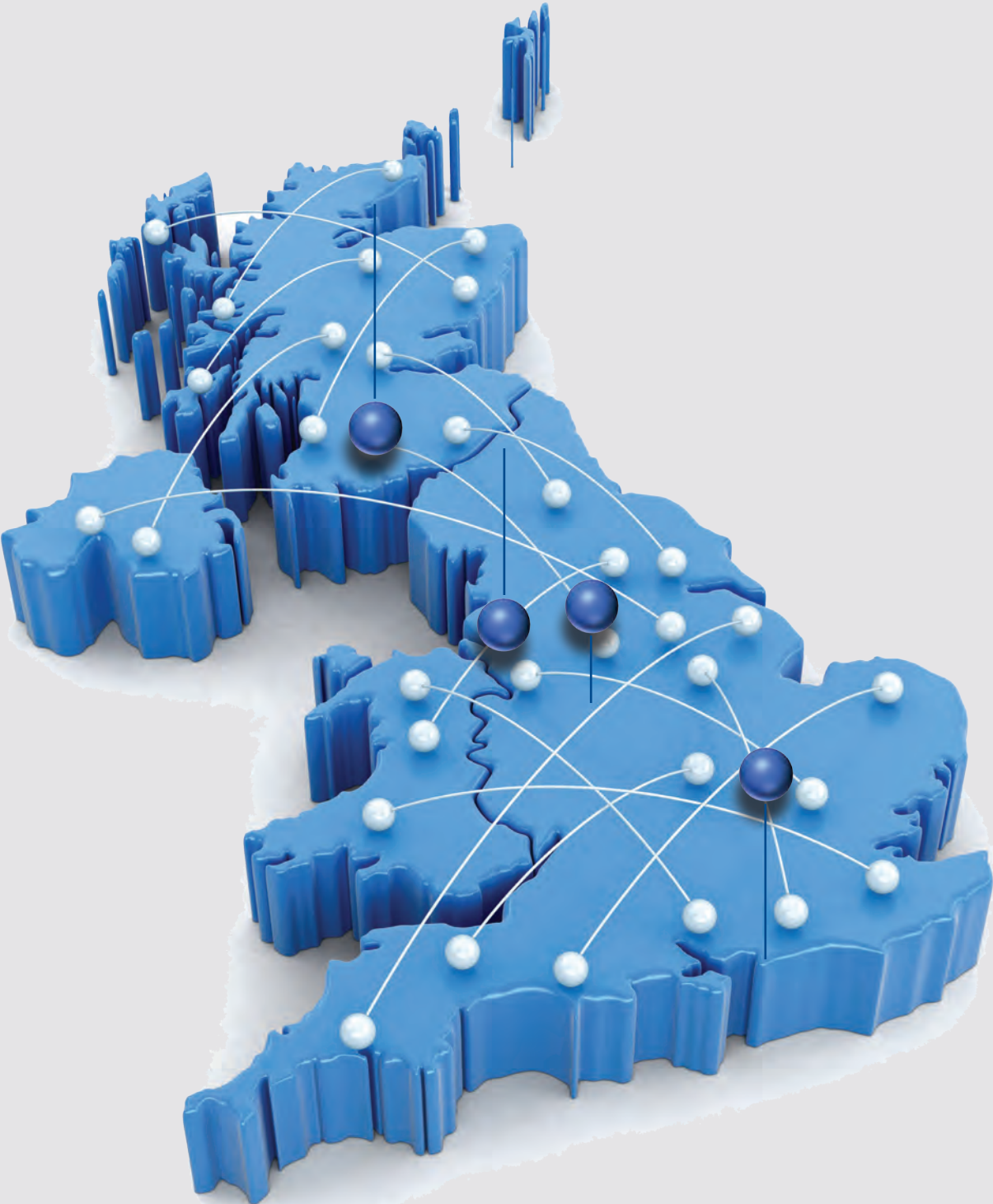
Systems:  
Standing Seam, Hot Melt & Cladding



# Coverage & capability.

Based in Bromborough, Wirral, and with additional offices situated nationwide, MAC has the financial capability and technical expertise to take on projects of any scale, anywhere in the UK.

We offer specification advice and full technical support across a broad range of external waterproofing disciplines, and work closely with the UK's leading manufacturers and other supply chain partners to maximise efficiencies on every project. Our dynamic, flexible approach also means that we help clients meet tight project deadlines and achieve their budgetary targets.



**Scotland Office  
Glasgow**

- Servicing projects across Scotland & North East England



**Head Office  
Bromborough**

- Servicing projects across the Midlands & North West England



**Northern Office  
Manchester**

- In-house architectural aluminium fabrication



**Southern Office  
Cambridge**

- Servicing projects across London and Southern England



Having quality employees is what makes us who we are and we will continue to invest in our people and recruit where needed in order to deliver many more successful projects across the UK.







**MAC Roofing & Contracting Ltd (Head Office)**

Unit 1, Lumina Business Park, Martindale Road, Bromborough, Wirral, CH62 3PT

**MAC Roofing & Contracting Ltd (Southern Office)**

Lakes Business Park, Unit 2 Willow Court, St. Ives, Cambridgeshire, PE28 9RD

**MAC Roofing & Contracting Ltd (Scotland Office)**

33-35 Dalsholm Avenue, Glasgow, Scotland, G20 0TS

T: 0151 346 2670

E: [enquiries@macroofing.com](mailto:enquiries@macroofing.com)

**[www.macgroupuk.com](http://www.macgroupuk.com)**