

# ROOFING & CLADDING EXCELLENCE

Specialists in building envelope protection



[www.macgroupuk.com](http://www.macgroupuk.com)





With over 45 years' experience, MAC Roofing has the capacity and know-how to deliver multi-disciplined projects of any scope all across the UK.



## A commitment to excellence.

Established in 1975, MAC is a family business that has grown to become one of the country's leading installers of roofing and cladding systems.

Over a period spanning more than four decades, we have been trusted to deliver countless waterproofing installations on both new build and refurbishment projects, working on some of the most prestigious buildings in the UK.

Quality is at the heart of all of our activities. Whether it's workmanship, health & safety, customer service or technical support, we always strive for excellence in everything we do.

We are proud of our reputation and look forward to playing our part in an ever-changing construction industry and continuing to deliver quality and reliability on every project.



# Delivering quality projects. Safely.

Safety is clearly an extremely important aspect when carrying out roofing or cladding projects of any kind.

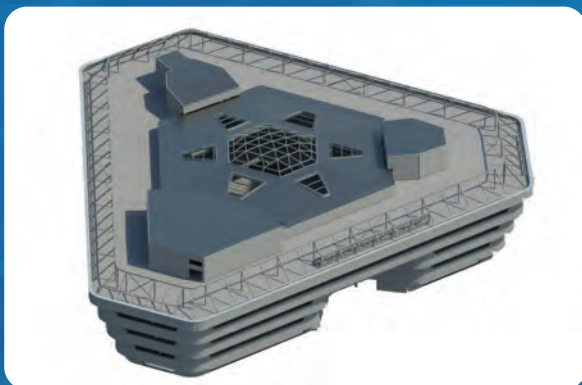
The health and wellbeing of all individuals onsite is our number one priority and we take all necessary steps to achieve this. MAC has an outstanding health & safety record and holds numerous industry accreditations in this area.



## Exceptional design & technical support.

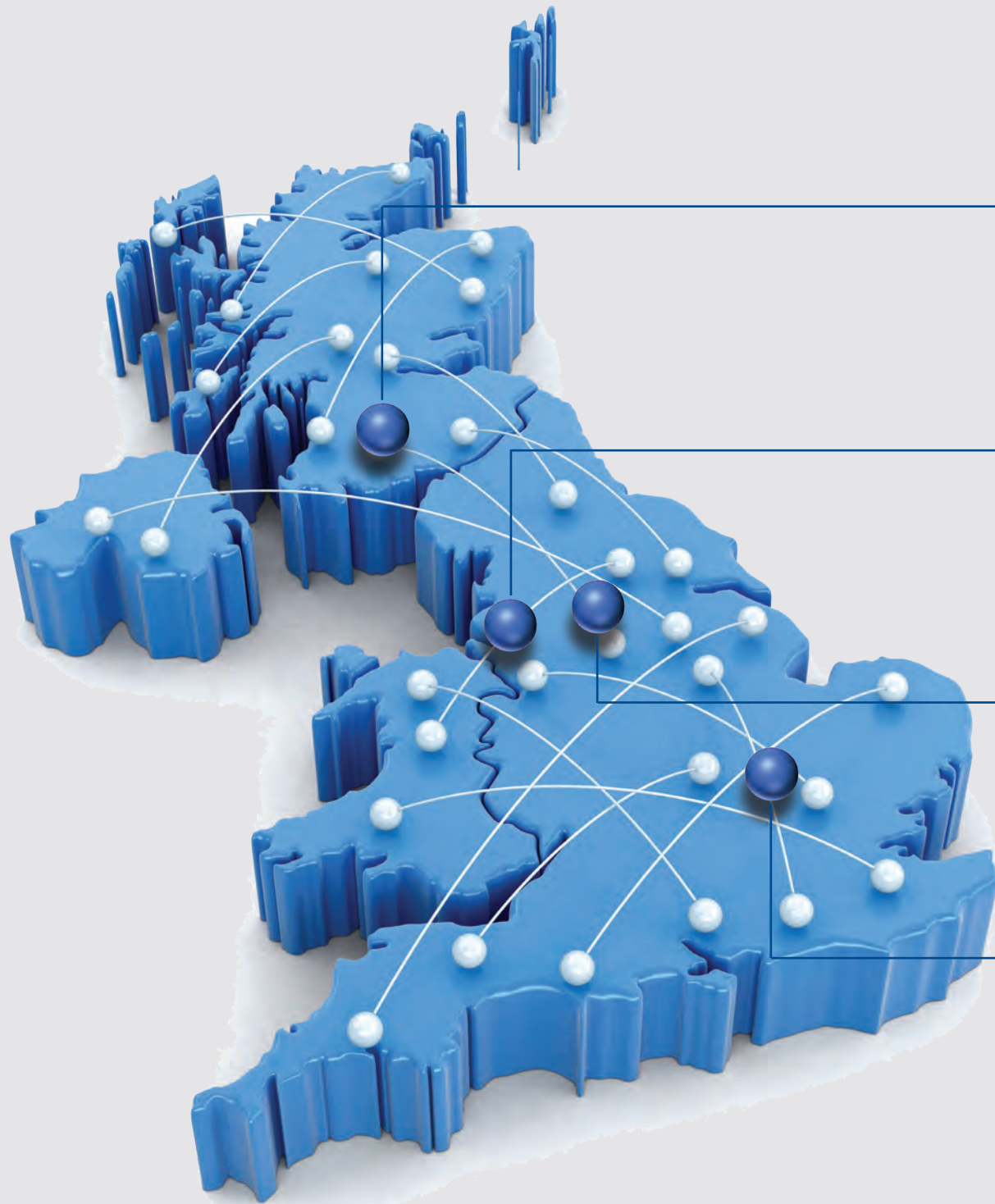
We listen to our clients to fully understand their requirements, enabling us to deliver an effective, long-term solution that fully meets their brief.

Our experienced Design team can offer practical and innovative advice, offering Level 2 BIM Compliant Specifications and expert assistance with cladding and roof design to maximise waterproofing integrity.



# Coverage & capability.

Based in Bromborough, Wirral, and with additional offices situated nationwide, MAC has the financial capability and technical expertise to take on projects of any scale, anywhere in the UK.



We offer specification advice and full technical support across a broad range of external waterproofing disciplines, and work closely with the UK's leading manufacturers and other supply chain partners to maximise efficiencies on every project. Our dynamic, flexible approach also means that we help clients meet tight project deadlines and achieve their budgetary targets.



**Scotland Office  
Glasgow**

- Servicing projects across Scotland & North East England



**Head Office  
Bromborough**

- Servicing projects across the Midlands & North West England



**Northern Office  
Manchester**

- In-house architectural aluminium fabrication



**Southern Office  
Cambridge**

- Servicing projects across London and Southern England



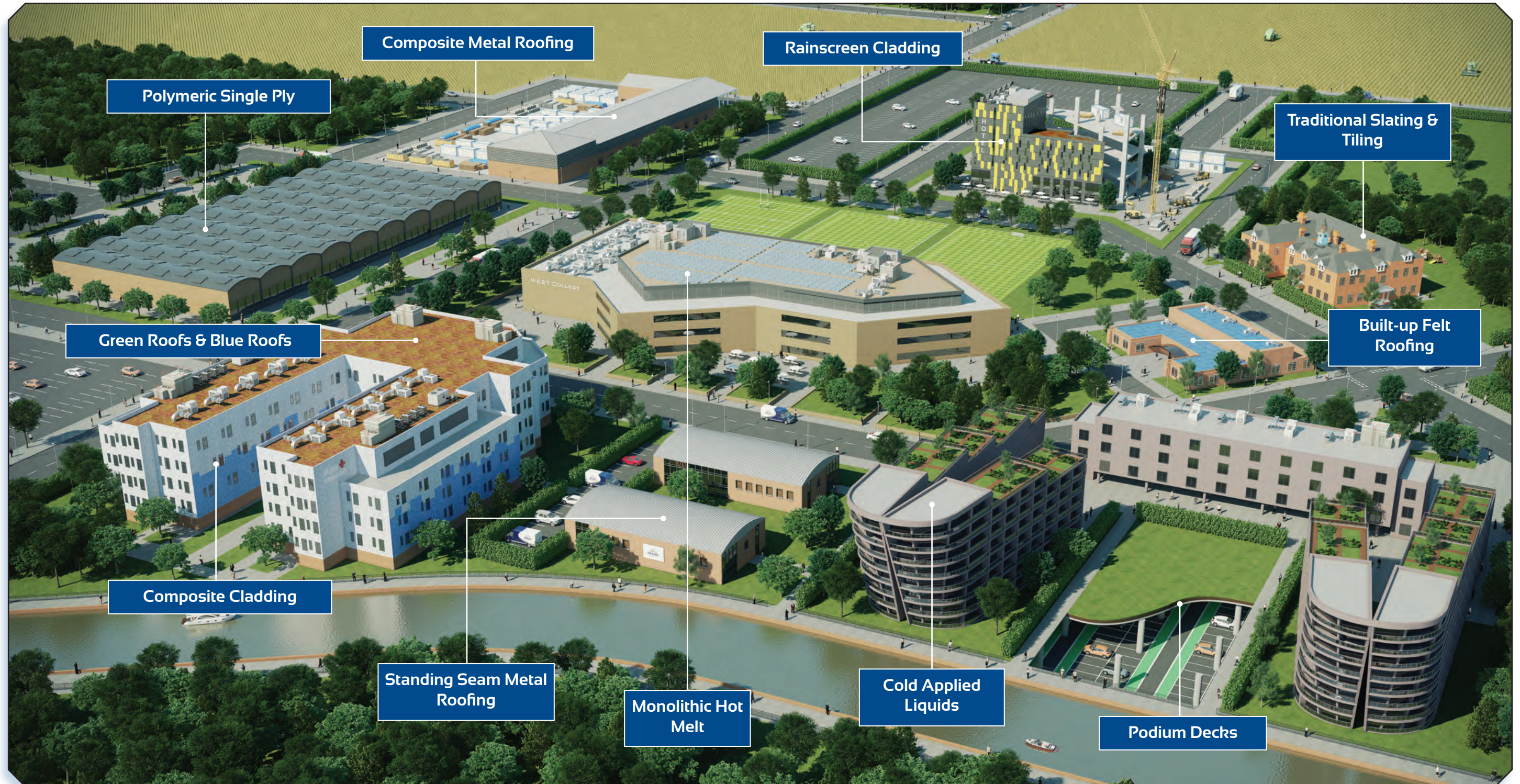
Having quality employees is what makes us who we are and we will continue to invest in our people and recruit where needed in order to deliver many more successful projects across the UK.





# A diverse, versatile skill-set.

With strategic locations across the UK, an in-house fabrication division and one of the largest teams of directly employed operatives, MAC has the ability to install virtually any type of flat roofing, pitched roofing or envelope cladding system.





# Protection for the future.

The environmental performance of a building can be equally as important as the other functions it fulfils. At MAC we are Carbon Zero certified and have ISO 9001, 14001 & 45001 accreditation. We only work with like-minded supply chain partners who share our commitment to responsibility in this area.

On MAC projects we utilise the most sustainable products and installation techniques available and operate stringent quality control and working procedures to minimise waste of materials and energy during site installations.

Within our portfolio is a variety of roofing and waterproofing systems that can help meet increasingly stringent legislative and environmental requirements. These include thermally efficient insulated roof build-ups, BRE Green Guide rated systems along with blue roofs and green roof landscaping finishes.





# A proud portfolio of work.

Very few other roofing contractors can match MAC's versatility, or our impressive portfolio of completed projects. Whether it's new build or refurbishment, public or private sector, we are immensely proud of our extensive portfolio of work.

We have experience across many market sectors, including:





# STEM Building, University of Birmingham

## New Build Case Study



**Sector**  
Education



**Size / Value**  
£1.8 Million



**Client**  
Morgan Sindall



### Solution Provided

- Hot Melt Waterproofing (1,800m<sup>2</sup>)
- Single Ply Waterproofing (1,200m<sup>2</sup>)
- Anodised Aluminium Shingles (1,600m<sup>2</sup>)





# Budenberg Apartments, Altrincham

## New Build Case Study



**Sector**  
Residential



**Size / Value**  
£1.1 Million



**Client**  
Urban Splash



### Solution Provided

- BUFR & Single Ply Roofing
- Green Roof Finishes
- 10,000m<sup>2</sup> of Inverted Roofing & 16,000m<sup>2</sup> of Podium Deck Protection over Car Park





# MSU Healthcare Unit, Ealing

## New Build Case Study



**Sector**  
Healthcare



**Size / Value**  
£1.2 Million



**Client**  
Kier



### Solution Provided

- Inverted Roof System with Hot Melt Waterproofing (5,760m<sup>2</sup>)
- Pitched Roof Slating
- Zinc Wall Cladding





# Liscard Primary School, Wirral

## Refurbishment Case Study



**Sector**  
Education



**Size / Value**  
1,500m<sup>2</sup>



**Client**  
Wirral MBC



### Solution Provided

- Decra Noxite Lightweight Tiling System (1,500m<sup>2</sup>)





# Alexander Stadium, Birmingham

## New Build Case Study



**Sector**  
Leisure



**Size / Value**  
6,400m<sup>2</sup>



**Client**  
McLaughlin & Harvey



### Solution Provided

- Kalzip Deck Roof System
- Tata Steel Structural Deck
- Kalzip 65 – Tapered Stucco Embossed
- Rockwool Hardrock & Kalzip Plus 40 quilt Insulation





# Wylfa Nuclear Power Station, Anglesey

## Refurbishment Case Study



**Sector**  
Utilities



**Size / Value**  
24,000m<sup>2</sup>



**Client**  
National Grid



### Solution Provided

- Built-up Felt Roofing (24,000m<sup>2</sup>)







**MAC Roofing & Contracting Ltd (Head Office)**

Unit 1, Lumina Business Park, Martindale Road, Bromborough, Wirral, CH62 3PT

**MAC Roofing & Contracting Ltd (Southern Office)**

Lakes Business Park, Unit 2 Willow Court, St. Ives, Cambridgeshire, PE28 9RD

**MAC Roofing & Contracting Ltd (Scotland Office)**

33-35 Dalsholm Avenue, Glasgow, Scotland, G20 0TS

T: 0151 346 2670

E: [enquiries@macroofing.com](mailto:enquiries@macroofing.com)

[www.macgroupuk.com](http://www.macgroupuk.com)