

CLADMAC R-F: RECESS FIX RAINSCREEN SYSTEM

TECHNICAL DATASHEET

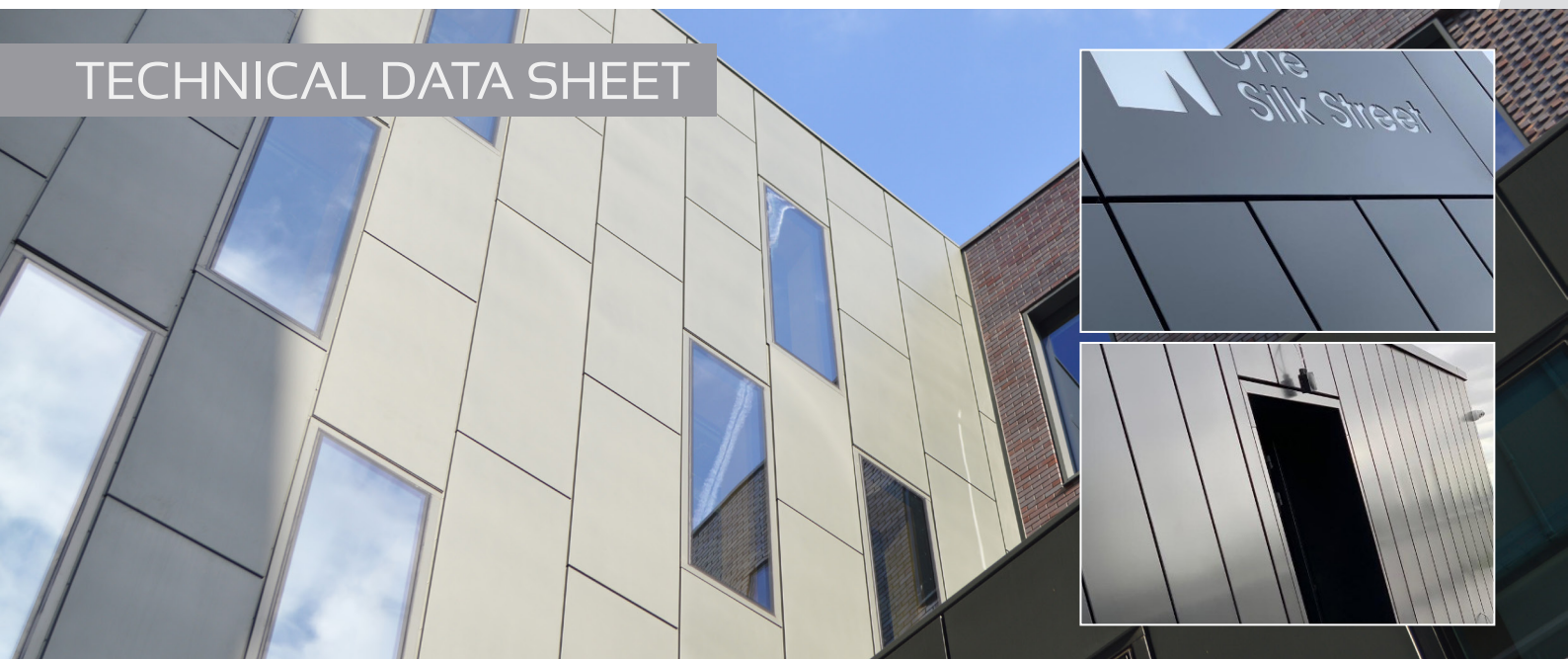


CladMAC R-F

Recess fix aluminium rainscreen system



TECHNICAL DATA SHEET



DESCRIPTION:

Can be installed horizontally or vertically. Can also be utilised as a soffit. Panels can be supplied with open ends and a powder coated butt strap or as a 4-sided panel.

MATERIAL:

Aluminium sheet to EN 485 /515/ 573: Grade 1050A H14, supplied by ISO 9001:2015 registered stockist to ensure traceability.

FIRE PERFORMANCE:

Reaction to fire classification: A2-s1, d0

SIZE:

Standard Panel Depth - 34mm
Maximum Face Size – 1051mm wide x 2838mm long

GAUGE:

2.0mm or 3.0mm

FINISH:

Mill finish or polyester powder coated.

COLOUR:

Polyester powder coated colour to a standard RAL, BS 4800 or BS 381 C range by Akzo Nobel, applied by MAC - a Service First, ISO 9001 approved applicator. Applied to standards indicated in BS 6496.

SUPPORT:

- Bracket Support design is subject to the customer / project requirements. Common Options:
 - Direct Fix: Substructure will determine quality of levelling
 - Timber Framing: Provided by others:- the substructure will determine the quality of levelling.
 - MAC Carrier System: Consisting of 100mm long Carrier Brackets and up to 6m long Angles and/or T sections allowing full adjustability.

FIXING METHOD:

- Fixing of bracket support is determined by the substructure
- The over lapped panels are secured to the bracketry using a colour match BM-LP-LS 25mm star head fixing.

ACCESSORIES:

- Ventilation: Perforated panels if required
- Starter Trim: Supplied in 3m Lengths
- Sills: Supplied in 3m Lengths
- Bespoke Corners/Transition Sections
- Closure Trims: Supplied in 3m Lengths
- Butt Straps: Supplied in 100-150mm Lengths



MAC Head Office
Unit 1, Lumina Business Park
Martindale Road, Bromborough
Wirral, CH62 3PT

MAC Fabrications
Captain Clarke Road
Broadway Industrial Estate, Hyde
Cheshire, SK14 4QG

(T) 0151 346 2670
(E) enquiries@macroofing.com
(W) www.macgroupuk.com

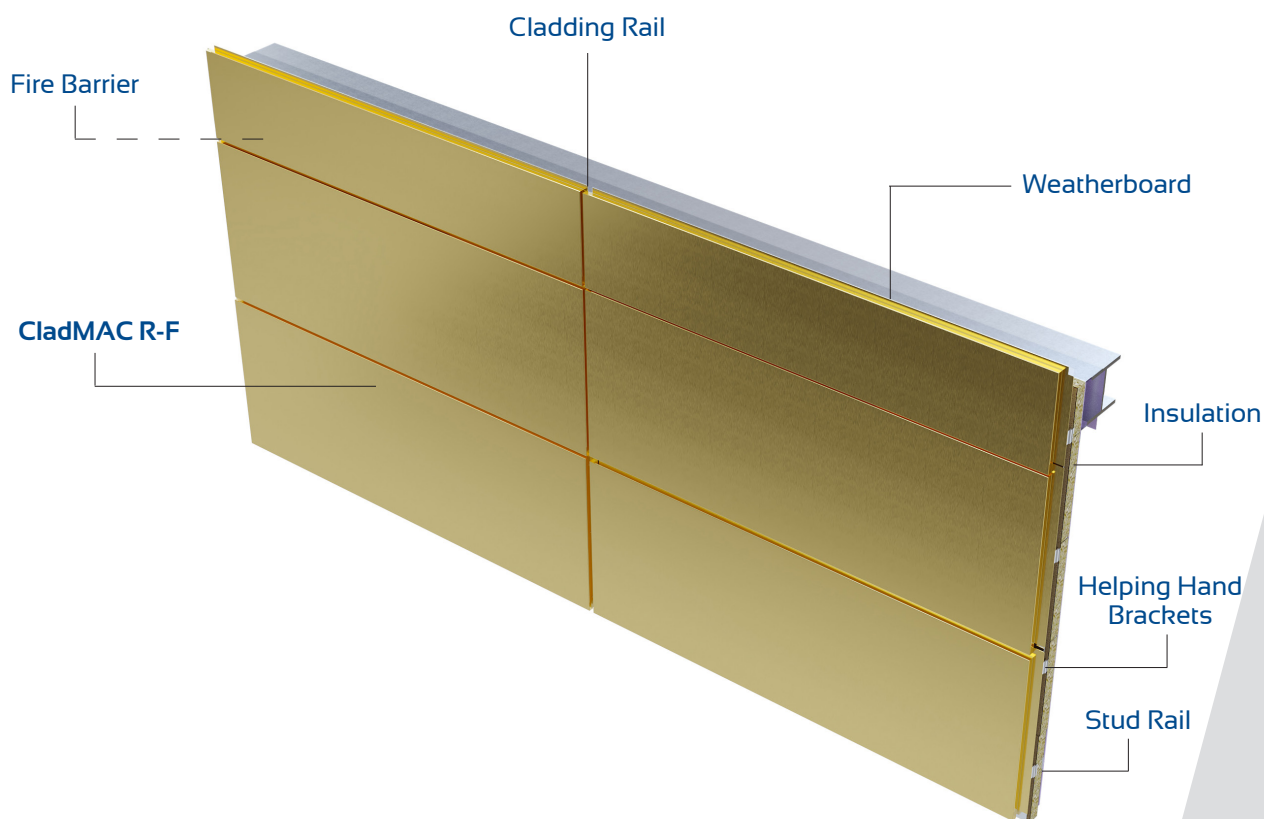
CladMAC R-F

Recess fix aluminium rainscreen system



SYSTEM ILLUSTRATION

SYSTEM COMPONENTS:



FURTHER INFORMATION



Scan to view the
CladMAC R-F Video



Scan to view our other
CladMAC Systems



Manufacturing In Britain



MAC Head Office
Unit 1, Lumina Business Park
Martindale Road, Bromborough
Wirral, CH62 3PT

MAC Fabrications
Captain Clarke Road
Broadway Industrial Estate, Hyde
Cheshire, SK14 4QG

(T) 0151 346 2670
(E) enquiries@macroofing.com
(W) www.macgroupuk.com