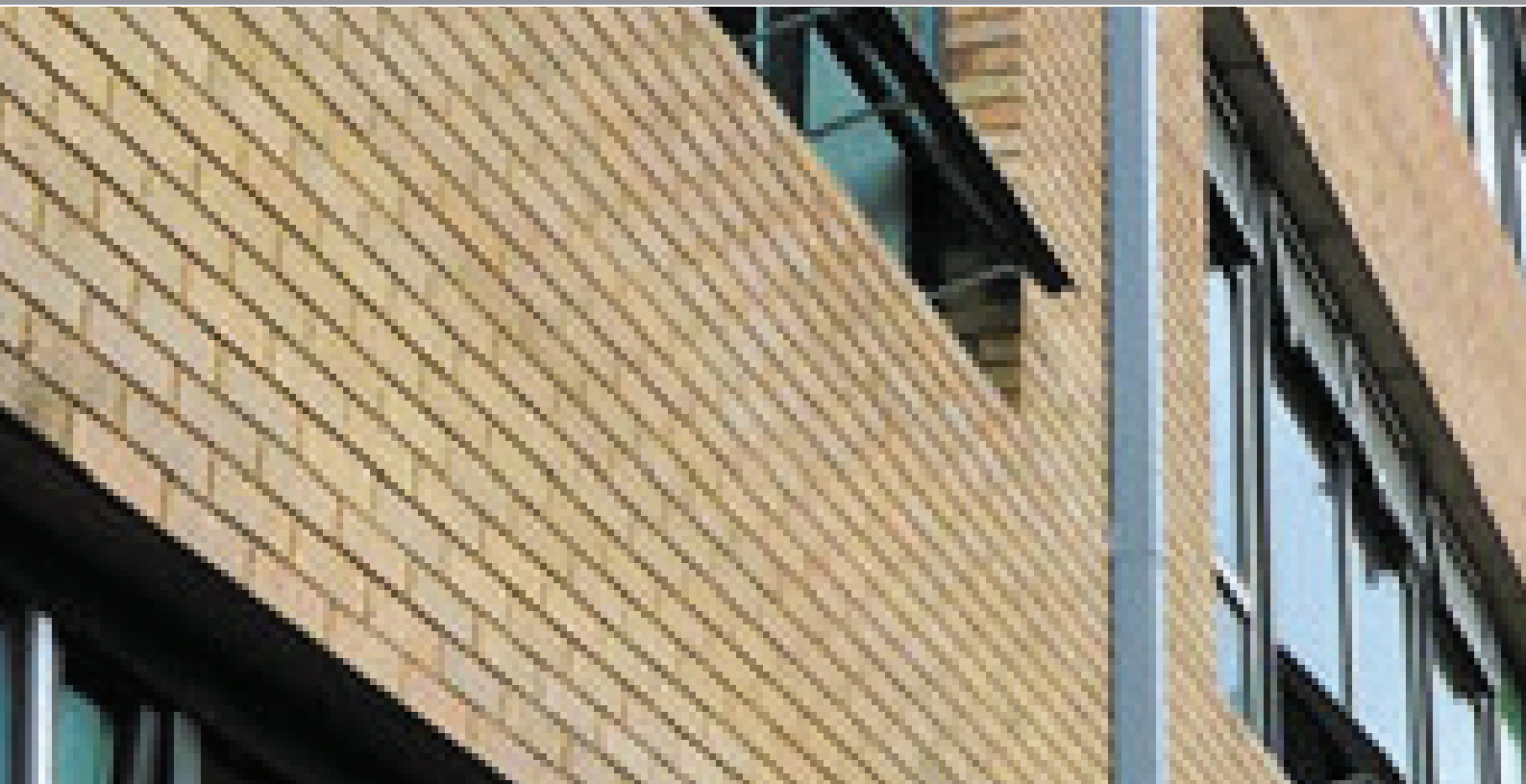


VANDAL RESISTANT RAINWATER PIPES

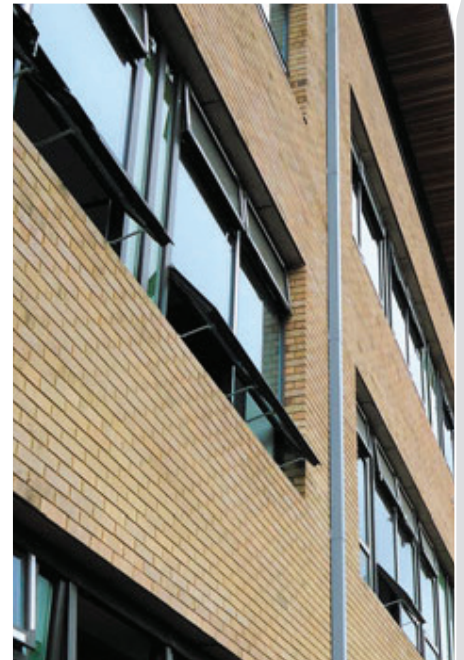
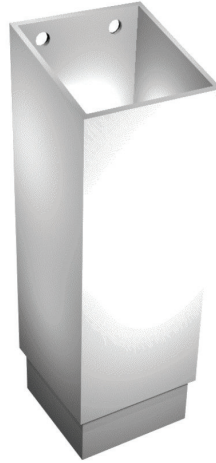
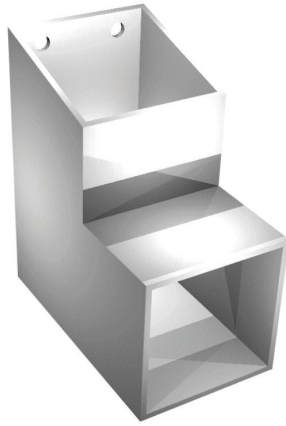
TECHNICAL DATASHEET



www.macgroupuk.com



TECHNICAL DATA SHEET



DESCRIPTION: Extruded aluminium downpipe with reinforcing flanges at rear and concealed fixing points.

STANDARD: BS EN 612: 2005, BS EN 1462: 2004.

PROFILE: Square and Round Profiles with flanges at rear for extra rigidity and to connect pipe to wall. Factory-made jointing mechanism incorporating concealed fixing points.

MATERIAL: Extruded Aluminium Alloy 6063 (T4, 5 and 6).

SIZES: Square: 100x100mm (JSP 4/ AV)

WALL THICKNESS: 2.5mm unless otherwise specified.

FINISH: Mill finish or polyester powder coated.

COLOUR: Polyester powder coated colour to a standard RAL, BS 4800 or BS 381 C range by Akzo Nobel, applied by MAC - a Service First, ISO 9001 approved applicator. Applied to standards indicated in BS 6496.

FIXING METHOD: Downpipes fixed through concealed fixing points on rear of pipe at one end of each pipe length. Fixing point will vary according to pipe length.
Up to 3m lengths are available in round section; up to 2m lengths are available in square section.
Fixings: Nylon hammerscrews or equivalent. Expansion co-efficients are incorporated in the design.