

# CLADMAC RF - RECESS FIX RAINSCREEN SYSTEM

TECHNICAL DATASHEET



[www.macroofing.com](http://www.macroofing.com)

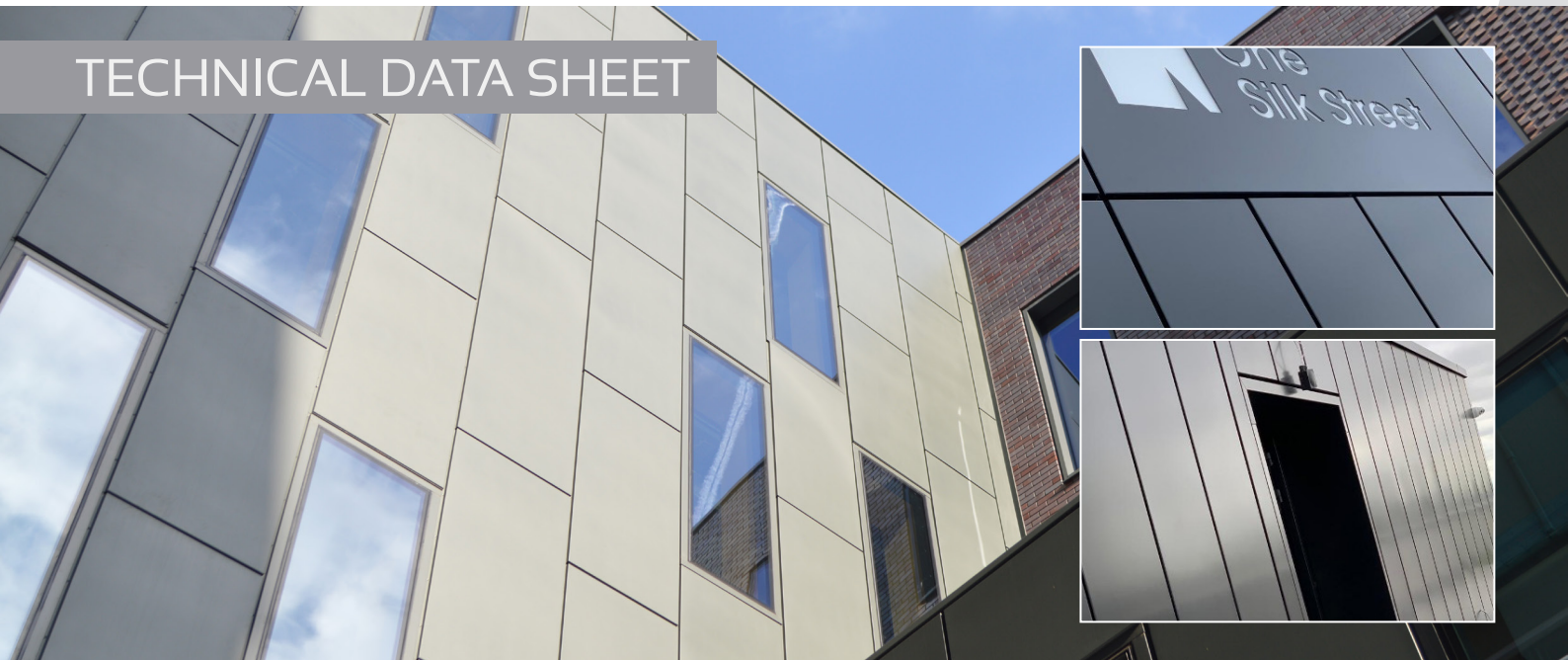


# CladMAC RF

## Recess fix aluminium rainscreen system



### TECHNICAL DATA SHEET



#### DESCRIPTION:

Can be installed horizontally or vertically. Can also be utilised as a soffit. Panels can be supplied with open ends and a powder coated butt strap or as a 4-sided panel.

#### MATERIAL:

Aluminium sheet to EN 485 /515/ 573: Grade 1050A H14, supplied by ISO 9001:2015 registered stockist to ensure traceability.

#### FIRE PERFORMANCE:

Reaction to fire classification: A2-s1, d0

#### SIZE:

Standard Panel Depth - 34mm  
Maximum Face Size – 1051mm wide x 2838mm long

#### GAUGE:

2.0mm or 3.0mm

#### FINISH:

Mill finish or polyester powder coated.

#### COLOUR:

Polyester powder coated colour to a standard RAL, BS 4800 or BS 381 C range by Akzo Nobel, applied by MAC - a Service First, ISO 9001 approved applicator. Applied to standards indicated in BS 6496.

#### SUPPORT:

- Bracket Support design is subject to the customer / project requirements. Common Options:
  - Direct Fix: Substructure will determine quality of levelling
  - Timber Framing: Provided by others:- the substructure will determine the quality of levelling.
  - MAC Carrier System: Consisting of 100mm long Carrier Brackets and up to 6m long Angles and/or T sections allowing full adjustability.

#### FIXING METHOD:

- Fixing of bracket support is determined by the substructure
- The over lapped panels are secured to the bracketry using a colour match BM-LP-LS 25mm star head fixing.

#### ACCESSORIES:

- Ventilation: Perforated panels if required
- Starter Trim: Supplied in 3m Lengths
- Sills: Supplied in 3m Lengths
- Bespoke Corners/Transition Sections
- Closure Trims: Supplied in 3m Lengths
- Butt Straps: Supplied in 100-150mm Lengths



**MAC Head Office**  
Unit 1, Lumina Business Park  
Martindale Road, Bromborough  
Wirral, CH62 3PT

**MAC Fabrications**  
Captain Clarke Road  
Broadway Industrial Estate, Hyde  
Cheshire, SK14 4QG

(T) 0151 346 2670  
(E) [enquiries@macroofing.com](mailto:enquiries@macroofing.com)  
(W) [www.macroofing.com](http://www.macroofing.com)

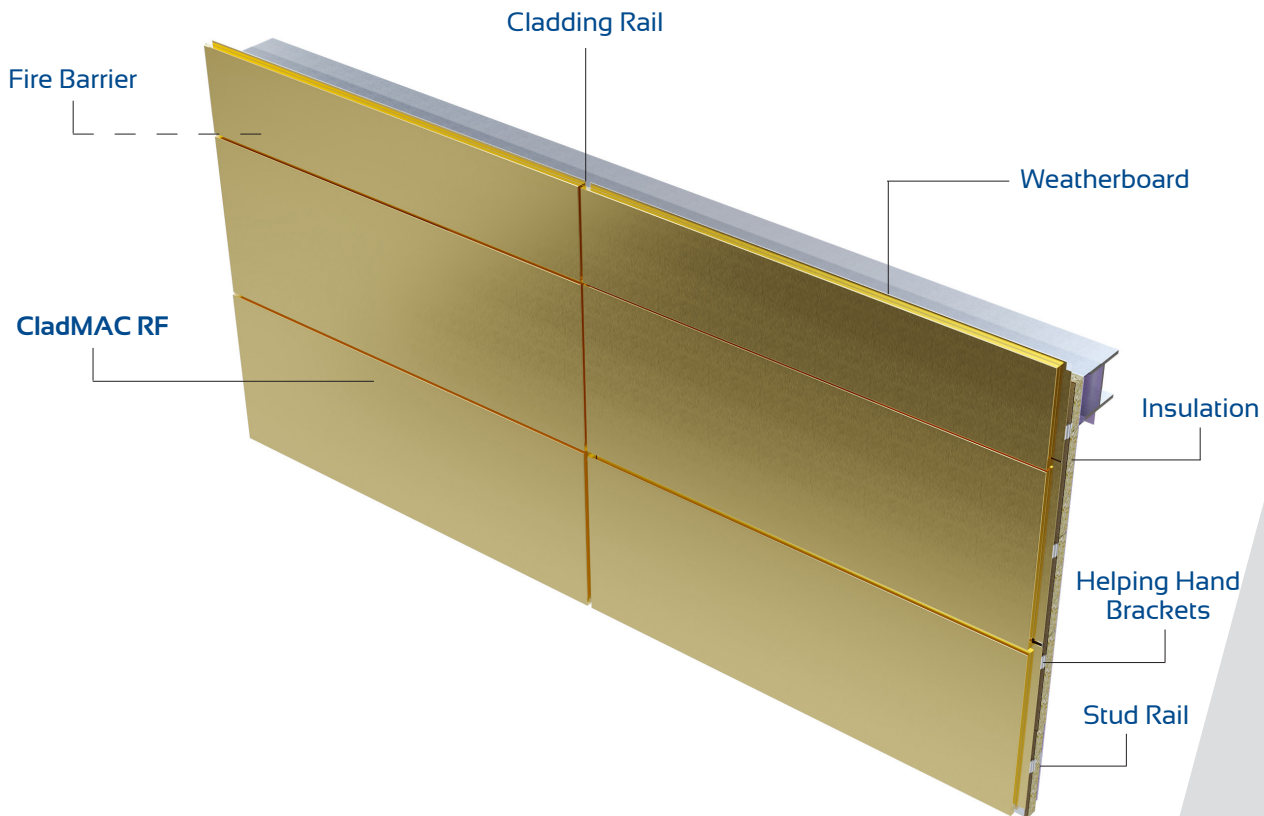
# CladMAC RF

## Recess fix aluminium rainscreen system



### SYSTEM ILLUSTRATION

#### SYSTEM COMPONENTS:



#### FURTHER INFORMATION



Scan to view the  
CladMAC RF Video



Scan to view our other  
CladMAC Systems



Manufacturing In Britain



**MAC Head Office**  
Unit 1, Lumina Business Park  
Martindale Road, Bromborough  
Wirral, CH62 3PT

**MAC Fabrications**  
Captain Clarke Road  
Broadway Industrial Estate, Hyde  
Cheshire, SK14 4QG

(T) 0151 346 2670  
(E) [enquiries@macroofing.com](mailto:enquiries@macroofing.com)  
(W) [www.macroofing.com](http://www.macroofing.com)